



Navigating Nature

A Program Guide

- ⊕ Heritage
- ⊕ Environmental Science
- ⊕ Outdoor Recreation
- ⊕ Stewardship

General Interest

Kindergarten to Grade

Grade 4 to 6

Grade 5 to 12

Family & Adult

Snowshoe Rentals

Parks Information

Our Sponsors



Weyerhaeuser



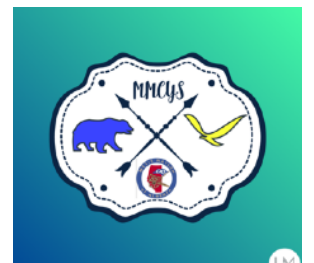
KEYERA



Intercon Messaging
Live Answer. Reliable Solutions.



Byram
Family
Foundation



The generosity of our sponsors allows us to provide free programs to children and youth!

Thank You!

Eagle Point-Blue Rapids Parks Council

We are a community based, not-for-profit organization, governed by a voluntary Board of Directors. Our board is comprised of recreational organizations, government and industry representatives who work together to ensure that we meet our mission and vision. Thank you to all our dedicated volunteers for their commitment!

Our Mission

To enhance and protect the Eagle Point Provincial Park and the Blue Rapids Provincial Recreation Area by working collaboratively with our partners to implement innovative park planning, funding and management for the benefit and public enjoyment of current and future generations.

Our Vision

A sustainable balance of diverse recreational opportunities and environmental protection for all to enjoy in the Eagle Point Provincial Park and Blue Rapids Provincial Recreation Area.



Contact Us

Eagle Point-Blue Rapids Parks Council

Box 7355,
2nd Floor Provincial Building, 5136-51 Avenue
Drayton Valley, Alberta
T7A 1S6
Office: 780-898-7275

website: www.epbrparksCouncil.org

Sandra Bannard

(Executive Director)

sandra@epbrparksCouncil.org

Kathy Schwengler

(Education & Outreach Coordinator)

outreach@epbrparksCouncil.org

Rita Fowell

(Nature Educator)

education@epbrparksCouncil.org

Tawnya Dooper

(Finance & Administration)

finance@epbrparksCouncil.org

Jenn Budd

(Marketing & Tourism Specialist)

jenn@epbrparksCouncil.org

Message from Eagle Point-Blue Rapids Parks Council Staff



Navigating Nature

Welcome to the Eagle Point-Blue Rapids Parks Council Program Guide! We create and facilitate positive, hands-on, outdoor experiences for youth and adults in our beautiful park settings! With community feedback and consultation, our nature based programs have grown and evolved into a high-demand resource!

We are excited to share our new education strategy called “Navigating Nature.” We want to support individuals by offering nature based adventures that reconnect them to each other as well as to “Nature’s Community”.

The 5 Pillars of “Navigating Nature”

- **Technology Free**



Many of our sessions leave technology behind to enhance an immersive experience in the delights of the natural world with no electronic interruptions.

- **Mental Wellness**



Our outdoor programs, surrounded by Mother Nature, lead participants of all ages on a path to better mental and physical health.

- **Team Work**



We provide fun opportunities to build skills in cooperation, creativity and collaboration - a benefit to both youth and adults.

- **Strengthening Community**



We strive to help our participants to build community connections in the human realm as well as with their natural world.

- **Empowerment**



Many of our Outdoor Education sessions provide experiences that help participants feel a sense of empowerment while developing self confidence and resilience.

The Parks Council strives to awaken people to the beauty and wonder of our natural world. We endeavour to provide opportunities for our participants to become familiar with the people, animals, plants and assets that surround them.

*When you know and love something,
you protect and cherish it!*

www.epbrparksCouncil.org/education/



THREE WAYS TO BOOK A PROGRAM

ONLINE

DOWNLOAD OUR DIGITAL PROGRAM GUIDE AND COMPLETE THE ONLINE BOOKING REQUEST AT WWW.EPBRPARKSCOUNCIL.ORG/EDUCATION/

EMAIL

SEND US AN EMAIL, REQUESTING A PROGRAM. INCLUDE SPECIFICS - HOW MANY PARTICIPANTS, DESIRED DATE AND TIME, ETC.

OUTREACH@EPBRPARKSCOUNCIL.ORG

CALL US

CALL US WITH YOUR REQUEST - EAGLE POINT-BLUE RAPIDS PARKS COUNCIL OFFICE PHONE NUMBER:

780-898-7275.

- ◆ **CHOOSE A PROGRAM:** Use this guide to choose an age/grade appropriate program for your participants.
- ◆ **PICK A DATE and TIME:** Programs run from one hour to a full day. Program availability depends on the season.
- ◆ **CHOOSE A LOCATION:** Will you bring your group to a location in the parks or should we visit your location?

Program Guide



- * **General Interest Programs**
- * **Kindergarten to Grade 3 Programs**
- * **Grade 4 to 6 Programs**
- * **Grade 5 to 12 Programs**
- * **Family & Adult Programs**
- * **Snowshoe Rentals**
- * **Parks Information**

FREE GENERAL INTEREST PROGRAMS FOR KIDS & YOUTH

PROGRAM	CONNECTIONS	SEASONS AVAILABLE	LOCATION	PAGE
ALL ABOUT BIRDS	OBSERVATIONS IN NATURE, LIFE SCIENCE, HOBBIES, WELLNESS, NATURAL HISTORY OF ALBERTA	MAY TO SEPTEMBER	Flexible	10
FOREST DETECTIVES	SUITABLE FOR KIDS AND FAMILIES - OBSERVATIONS IN NATURE, LIFE SCIENCE, NATURAL HISTORY OF ALBERTA	SUITABLE IN MONTHS WITH SNOW	Combination of indoor presentation and outdoor exploration.	11
INTRODUCTION TO GEOCACHING	MAP READING SKILLS, GPS SKILLS, PHYSICAL EDUCATION, HEALTH & WELLNESS	YEAR ROUND	Wiley West Campground or Drayton Valley townsite	12
INTERPRETIVE WALK (OPTION TO ADD ON NATURE JOURNALS) WITH EAGLE POINT STAFF	PLANT & TREE IDENTIFICATION, USE OF PLANTS BY HUMANS (HISTORICAL & CURRENT), WELLNESS, NATURAL HISTORY OF ALBERTA, STEWARDSHIP	Fall, Spring, Summer	Parks Trails	13
NATURE CRAFTS	ART, MINDFULNESS, OUTDOORS	APRIL TO OCTOBER	Pembina Nordic Centre	14
OUTDOOR GAMES (INCLUDES PREDATOR-PREY)	PHYSICAL EDUCATION, HEALTH & WELLNESS, LIFE SCIENCE, NATURAL HISTORY OF ALBERTA	YEAR ROUND	School grounds, Pembina Nordic Centre, etc.	15
FURS, SKULLS AND ANTLERS	SUITABLE FOR KIDS AND FAMILIES - LIFE SCIENCE, TRAPPING INDUSTRY (HISTORICAL AND CURRENT), CURRICULUM LINKS - SCIENCE, ANIMAL ADAPTATIONS	YEAR ROUND	Indoor locations including the Pembina Nordic Outdoor Education Centre.	16
OWL DISCOVERY	GRADE 3 SCIENCE (ANIMAL LIFE CYCLES), NATURAL HISTORY OF ALBERTA	YEAR ROUND	Indoor program can take place at your classroom or at the Pembina Nordic Centre's Outdoor Education Centre.	17
CITIZEN SCIENCE PROJECT	COMMUNITY, ENVIRONMENTAL EDUCATION, STEWARDSHIP, LIFE SCIENCE, NATURAL HISTORY OF ALBERTA	YEAR ROUND	In Eagle Point Prov. Park, Blue Rapids Provincial Rec. Area or via visit to your classroom.	18

FREE PROGRAMS FOR KINDERGARTEN TO GRADE 3



PROGRAM	CONNECTIONS	SEASONS AVAILABLE	LOCATION	PAGE
WINTER ADAPTATIONS	SEASONAL CHANGES, 5 SENSES, SMALL FLYING AND CRAWLING INSECTS.	OCTOBER TO MARCH	Outdoor Program	19
SCIENCE OF SNOW	ENVIRONMENT & COMMUNITY AWARENESS), SEASONAL CHANGES, NEEDS OF PLANTS AND ANIMALS.	MID NOVEMBER TO EARLY MARCH (SNOW IS A NECESSITY FOR THIS PROGRAM)	Mix of classroom and school yard activities.	20
NATURE'S NOTIONS	CREATIVE EXPRESSION & ENVIRONMENT & COMMUNITY AWARENESS, SCIENCE (CREATING COLOUR, SEASONAL CHANGES, NEEDS OF PLANTS AND ANIMALS, 5 SENSES.	MAY, JUNE, SEPTEMBER	Near your school or within our parks.	21
MARVELLOUS MISUNDERSTOOD BATS	SMALL CRAWLING AND FLYING ANIMALS 5 SENSES, ECHOLOCATION	YEAR ROUND CLASSROOM BASED PROGRAM	Classroom or Pembina Nordic Outdoor Ed. Centre	22
BUGOLOGY	SMALL CRAWLING AND FLYING ANIMALS, LIFE CYCLES, ADAPTATIONS	MID MAY, JUNE AND SEPTEMBER	Near your school or within our parks.	23
EXPLORING CARDINAL DIRECTIONS	SCIENCE (MAGNETISM), MAPPING	SEPTEMBER, MID APRIL TO JUNE	Discovery Park, Drayton Valley	24



FREE PROGRAMS FOR GRADE 4 TO 6

PROGRAM	CONNECTIONS	SEASONS AVAILABLE	LOCATION	PAGE
TREELYMPICS	PLANT GROWTH AND CHANGE, NEEDS OF PLANTS, ADAPTATIONS OF PLANTS, PHOTOSYNTHESIS, CARBON CYCLE	MAY, JUNE, SEPTEMBER	School yard or Pembina Nordic Centre	25
NATURE'S RECYCLERS	WASTE IN OUR WORLD, CARBON CYCLE, DECOMPOSERS, HYPOTHESES	MAY, JUNE, SEPTEMBER	Wooded area near your school or within our parks	26
FIRST PEOPLES' TEACHINGS	STORIES, HISTORIES AND PEOPLE OF ALBERTA, LIFE WAYS OF OUR FIRST PEOPLES.	MAY, JUNE	Pembina Nordic Centre	27
FUR TRADE EXPERIENCE	STORIES, HISTORIES AND PEOPLE OF ALBERTA, LIFE WAYS OF OUR FIRST PEOPLE, EUROPEAN COLONIZATION, BARTERING	JANUARY	Pembina Nordic Centre	28
WONDERS OF WETLANDS	WETLAND ECOSYSTEMS, LIFE CYCLES OF AQUATIC/ TERRESTRIAL ORGANISMS, UPLAND HABITAT, ABIOTIC AND BIOTIC FACTORS, ANIMAL ADAPTATIONS , LIFE CYCLES	MAY, JUNE, SEPTEMBER	Pond located near your school or within Eagle Point Provincial Park	29
WONDERS OF WETLANDS/ RECLAMATION STUDY WITH SECURE ENERGY	WETLAND ECOSYSTEMS, LIFE CYCLES OF AQUATIC/ TERRESTRIAL ORGANISMS, UPLAND HABITAT, ANIMAL ADAPTATIONS , LIFE CYCLES, GROUND WATER, POLLUTION, RECLAMATION	SPECIFIC DATES IN MAY, JUNE OR SEPTEMBER	Secure Energy Reclamation Site southwest of Drayton Valley, AB	30

FREE PROGRAMS FOR GRADE 5 TO 12

PROGRAM	CONNECTIONS	SEASONS AVAILABLE	LOCATION	PAGE
INTRODUCTION TO OUTDOOR SURVIVAL	OUTDOOR EDUCATION, WOODS TRAVEL, SHELTERS, KNIFE SKILLS, FIRE LIGHTING, FIRE SAFETY, PREPAREDNESS	SEPTEMBER TO JUNE	Pembina Nordic Centre	31
WILDERNESS PRIMER (10 DIFFERENT SESSIONS AVAILABLE)	WOODS TRAVEL, SHELTERS, KNIFE SKILLS, FIRE LIGHTING, FIRE SAFETY, PREPAREDNESS, OUTDOOR GEAR & CLOTHING, CAMPFIRE COOKING, HYGIENE, FORAGING, BACKPACK ESSENTIALS	SEPTEMBER TO JUNE	School grounds, Pembina Nordic Centre, etc.	32
TEAM CHALLENGES	COLLABORATION, PLANNING, TEAM WORK, LEADERSHIP	YEAR ROUND	School grounds, Pembina Nordic Centre, etc.	33
TREES & FORESTS	TREES OF ALBERTA, DICHOTOMOUS KEYS, MEASURING TOOLS, TREE SURVEYS (BIODIVERSITY), HABITAT	MAY, JUNE, SEPTEMBER TO EARLY OCTOBER		34
EVIDENCE & INVESTIGATION	INVESTIGATING CRIME SCENES, COLLECTING EVIDENCE, ELIMINATING SUSPECTS, SUSPECT INTERVIEWS, ORAL PRESENTATIONS.	SEPTEMBER, OCTOBER, MID APRIL TO JUNE	Wooded area near your school or within our parks	35
ACTION FOR ENERGY (SEVERAL SESSIONS TO CHOOSE FROM)	ELECTRICAL CIRCUIT, ELECTRICAL EFFICIENCY, ENERGY SOURCES, CLIMATE LITERACY, SOLAR ENERGY, STEWARDSHIP	SEPTEMBER TO JUNE	Classroom, Pembina Nordic Centre, Drayton Valley Water Treatment Plant	36
ECOLOGY & BIODIVERSITY	ECOSYSTEM INTERACTIONS, HABITATS, HUMAN IMPACT, DIVERSITY OF SPECIES, SURVEY TOOLS	SEPTEMBER, OCTOBER, MAY, JUNE.	To be determined based on the project's scope.	37
EAGLE POINT RIVER STUDY	FRESH WATER ECOSYSTEMS, WATER CHEMISTRY, ASPECTS OF A HEALTHY RIVER VS A POLLUTED RIVER, AQUATIC INSECTS AS WATER HEALTH INDICATORS, KICK NET, COLLECTION METHODS.	MAY, JUNE, SEPTEMBER	Willey West Campground or other river shoreline.	38

FEE BASED PROGRAMS FOR ADULTS OR FAMILIES

PROGRAM	Summary	SEASONS AVAILABLE	LOCATION	PAGE
SNOWSHOE EXPERIENCE & SNOWSHOE RENTALS	OUTDOOR EDUCATION, WOODS TRAVEL	WINTER	PEMBINA NORDIC OR YOUR LOCATION	9
ANNUAL EVENTS & ACTIVITIES	We facilitate a great mix of outdoor events, from citizen science (bird counts) and art classes, to fishing & gold panning, to our annual Fire & Ice, Pumpkin Walk and our upcoming Twinkle Trail!	Year Round	Various locations	40
GUIDED SNOWSHOE OR HIKE WITH EAGLE POINT STAFF	Guided snowshoe or hike with Eagle Point Staff.	Year Round	Any lightly used trail or snow covered area.	41
INTERPRETIVE WALK /NATURE JOURNALS	Guided hike with Eagle Point Staff , exploring the Parks' flora & fauna. Optional Nature Journal session includes materials!	May to September	Parks Trails	41
TEAM BUILDING	Activities designed for organizations and businesses who want to boost staff morale and wellness.	September to May	Parks Location of your choice	42

Snowshoe Experience and Rentals

Snowshoe Rentals



Eagle Point-Blue Rapids has over 50 pairs of snowshoes, which are availability for a low rental fee to your school or organization. EPBR Staff can facilitate a Snowshoe Experience program for your organization or you can arrange to pick up the snowshoes you need from our office.

We have snowshoes to accomodate participants of most sizes, from 40 to 250 pounds (18 kg to 115 kg).

Contact our office for more information on snowshoe rentals at 780-898-7275.



All About Birds



In this introductory program, kids learn about birds including bird habitat, nesting behaviour and migration. They'll explore feathers, eggs, nests and bird sounds with hands on activities and go on a bird hunt with real binoculars. This program has an outdoor component - dress for the



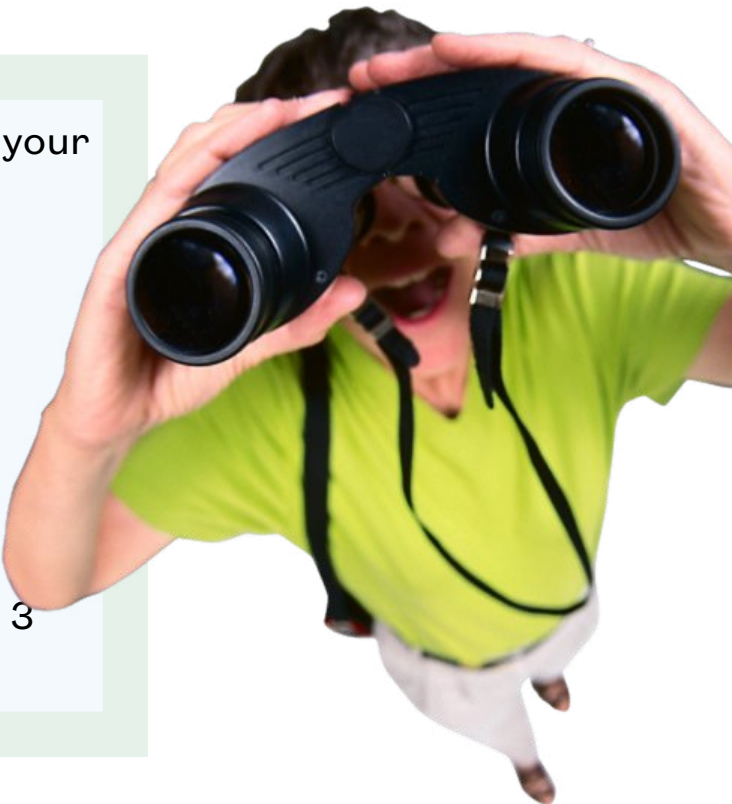
Location: Eagle Point Provincial Park or your location.*

When: May to September

How Long? 1 to 1 ½ hours

of Participants: 25 or less

Age: Suitable for Kindergarten to Grade 3



Forest Detectives

(Formerly known as Tracks n Scat)

Kids can learn to read the forest's stories through observing clues left behind by its inhabitants.

Participants develop those skills in this introductory program.

We begin indoors with a presentation and a hands-on exploration of replica tracks and scat before heading out on the trails in search of real evidence of animals on location.

Dress to get messy and be prepared for an outdoor excursion!



Location: Pembina Nordic Centre or your location.*

When: September to June

How Long? 1 to 1 ½ hours

of Participants: 20 to 25

Age: All ages



An Introduction to Geocaching



What *is* geocaching? Get started on this world wide scavenger hunt with our Introduction to Geocaching session. We'll learn about finding geocaches, hiding geocaches and geocaching etiquette. Electronic devices are required (cell phone or GPS). Presentation can include hunting for actual geocaches.



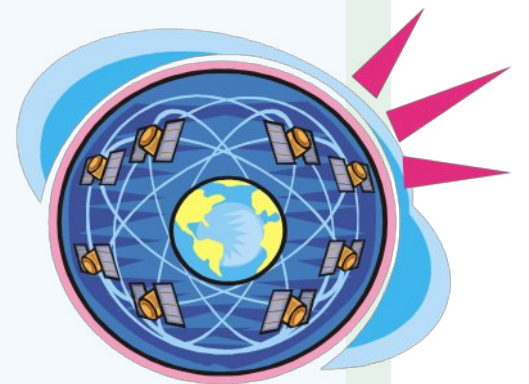
Location: Willy West Campground or classroom.

When: May to October

How Long? 20 minutes to 1 hour

of Participants: 25 or less

Age: All ages



Interpretive Walk & Nature Journals



Guided interpretive walk with Eagle Point staff. Explore the flora and fauna of our local wild areas to build a greater connection to our natural world. We touch on historical and current plant uses while learning about local natural history.

Combine the Interpretive Walk with an optional Nature Journalling session. We can supply the journals!

Location: Eagle Point Provincial Park

When: Year Round

How Long? 1 to 2 hours

of Participants: 20 to 25

Age: 8 and up



Nature Crafts

Collect your art supplies from nature's art store! Leaves, sticks, grass, moss, pebbles, lichens and pine cones can be incorporated into fun craft projects, wall hangings or paintings!



Location: Pembina Nordic Centre or other natural area.

When: Year round

How Long? 1 ½ to 2 hours

of Participants: 20 to 25

Age: All ages

Outdoor Games



Outdoor games to fill an hour! Get your kids or organization outside for some fresh air, team sports and physical activity! Capture the Flag, Lawn Games, Disc Golf, Predator-Prey and more!

Location: Eagle Point Provincial Park or your location.*

When: Year Round

How Long? 1 to 1 1/2 hours

of Participants: 20 to 25

Age: All Ages



Furs, Skulls & Antlers



All ages loves this program! Participants discover local mammals, their behaviours and habitats while experiencing real furs, skulls, antlers and bones! We discover how to tell whether a skull belongs to a carnivore or herbivore by its teeth shape. Kids check out a moose skeleton and figure out how the bones fit together.



Location: Pembina Nordic Centre or your location*

When: Year Round

How Long? 1 to 1 1/2 hours

of Participants: 20 to 25

Age: All Ages

Miller's
Animal Control Management



Owl Discovery

Owls are beautiful and interesting! Join Eagle Point staff for a presentation on Alberta's owl species. We focus owl adaptations and habitats and do investigative science with a hands-on owl pellet dissection to discover what they've been feeding on. This program can be adapted for different age groups.



Location: Your classroom or Pembina Nordic Centre.

When: Year round

How Long? 1 1/2 hours

of Participants: 20 to 25

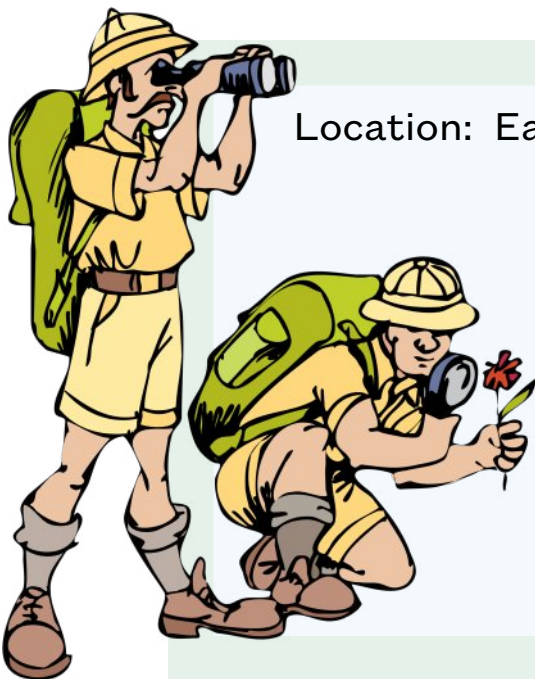
Age: Grade 3 and up.



Citizen Science Project



Want to do a short term or long term citizen science project? We can help you with resources, staff and guidance. Citizen science is a great way for kids and adults to contribute to a greater cause in their community or globally. Bioblitzes, bird counts, insect counts, plant surveys, bat surveillance, shore line clean up or tree planting are some examples of ways to get your class or organization involved in an exciting and fulfilling project!



Location: Eagle Point Provincial Park or Blue Rapids Provincial Recreation Area

When: Year Round

How Long? n/a

of Participants: n/a

Age: Grade 4 and up

BAT
CAVE

BEAR
DEN

Kindergarten to Grade 3

Winter Adaptations

BIRD
PASSPORT



Winter creates challenges for Alberta's animals. Animals adapt to cold weather and snow with a variety of physical and behaviour methods and that's the focus of this fun program. After a short discussion on ways animals cope with cold, kids are assigned an animal and must head out on a hunt to find items they need for their animal to survive winter. This can be done indoors or outdoors, but works best in a natural area!

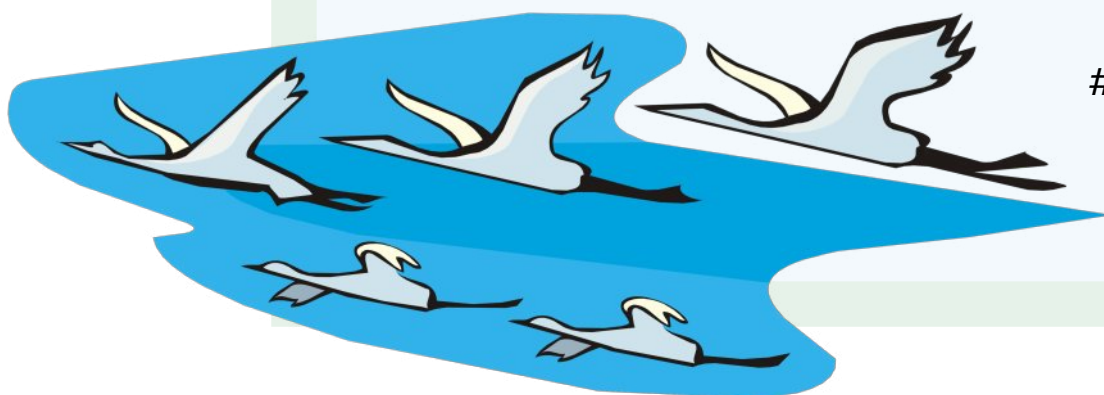
Location: Pembina Nordic Centre, classroom, school grounds.

When: October to March

How Long? 1 hour, 15 minutes

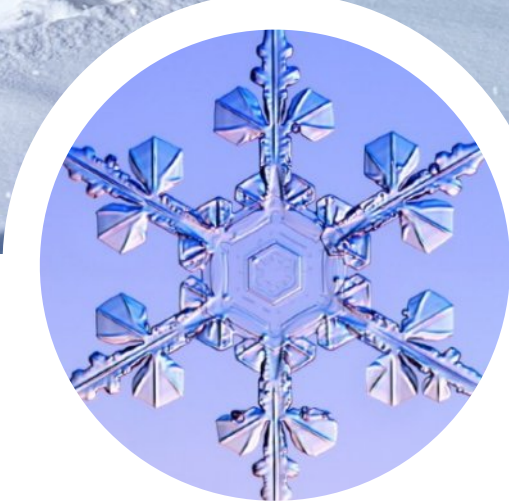
of Participants: 20 to 25

Age: Grade 1 to 3



The Science of Snow

Kindergarten to Grade 3



Participants explore snowflake formation and shapes and learn how humans and animals have adapted to our snow covered places. Kids play a snowflake game, build mini quinzees and explore animal connections with the Lynx & Hare game.

(Try our one hour, outdoor Animal Adaptations program that focuses on winter Adaptations of Alberta's wild animals! No snow required!)

Location: Your classroom and school yard or Pembina Nordic Centre.

When: Winter months

How Long? 1 1/2 hours

of Participants: 25 or less

Age: Kindergarten or Grade 1



Nature's Notions

This program gets our Grade 1's out in nature, exploring flora and fauna through colours, smells, textures and sounds. We believe kids who develop a strong connection to nature become adults who continue to have an active interest in our natural world.

Activities may include:

- * *Colour Safari*
- * *Nature Walk*
- * *Sorting Nature by colour or shape*
- * *Nature Crafts*
- * *Blind Walk*
- * *Tracks n Scat mini-program*
- * *All About Birds mini-program*



Location: Eagle Point Provincial Park.

When: May to September

How Long? 1 1/2 to 2 hours

of Participants: 20 to 25

Age: Grade 1



Marvellous Misunderstood Bats



Alberta's bats are an important part of our ecosystems. They play a great role in insect management in Canada, but globally they help pollinate many food crops. In this session, we debunk many myths about bats, learn about bats as insect eaters and pollinators, talk about stewardship and play some interactive games to explore echolocation and bat challenges!

Photo credit: Jason Headley /WCS Canada



Location: Pembina Nordic Centre or your classroom

When: Year Round

How Long? 1 1/2 hours

of Participants: 20 to 25

Age: Grade 2 to 3



Bugology



Let’s embrace the wonderful world of bugs in this fun outdoor session for kids! We’ll delve into the life cycles of insects and spiders while exploring 3 habitats - forest, pond and meadow! Activities include woodland bug safari, butterfly meadows and a close look at pond dwellers.

-  
-  
-  
-  
-  

Location: Eagle Point Provincial Park or a suitable natural area in your neighbourhood.

When: May to September

How Long? 1 1/2 hours

of Participants: 25 or less

Age: Grade 2



Exploring Cardinal Directions

Kindergarten to Grade 3



Kids explore cardinal directions, landmarks and pacing through games and discussion, then move on to learn basic compass skills before reading a map to find their way through a scavenger hunt! North, East, South and West!



Location: Discovery Park, Drayton Valley or your location.

When: May to October

How Long? 1 to 1 1/2 hours

of Participants: 20 to 25

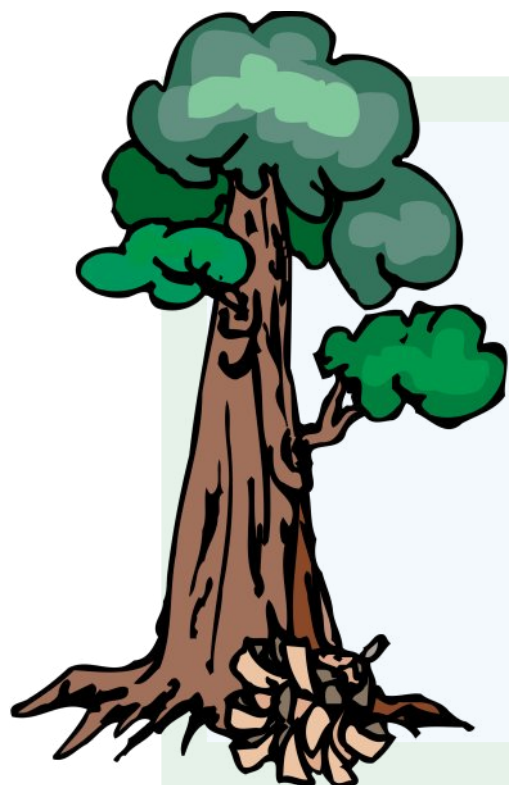
Age: Grade 2 to 3



Treelympics



This exciting session gets participants outdoors, competing with trees in feats of endurance, strength and speed while incorporating tree “terminology” like xylem, phloem and photosynthesis. Games incorporate concepts like the movement of nutrients and water through tree tissues, seed dispersal, etc. Treelympics is one of our most popular sessions! This session works best on warm days!



Location: Outdoors!

When: Mid May to end of September

How Long? 1 1/2 hours

of Participants: 20 to 25

Age: Grade 4 to 7



Nature's Recyclers



Using observations and soil sampling methods, participants explore two different habitats, comparing “nature’s recyclers” they find in both. Secondary activities include decomposer bingo and a study of decomposers found in garbage.

Location: Forested location in the Parks or your forested location.

When: May to September

How Long? 1 1/2 to 2 hours

of Participants: 25 or less

Age: Grade 4



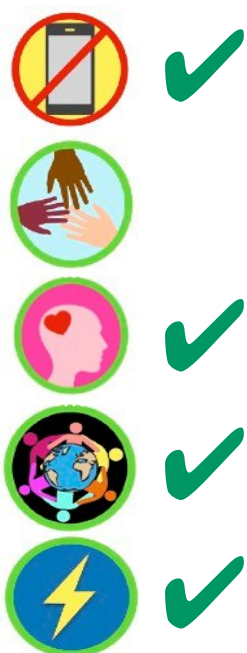
Grade 4 to 6

First Peoples' Teachings

This program is facilitated by Peyak Aski Elders & Knowledge Keepers. Participants spend a day immersed in Indigenous & Metis culture. Activities include Smudging Ceremony, Tipi Teachings, Medicine Wheel, Talking Stick and Metis Lifestyles.

Lunch provided by EPBR Parks Council and Pembina Pipeline.

Due to the nature of this program, we have limited availability/dates.



Location: Pembina Nordic Centre

When: May (limited number of dates available)

How Long? 9:30 am to 2:30 pm

of Participants: 60

Age: Grade 4



Fur Trade Experience

Grade 4 to 6



Participants visit the remote trading post of Boggy Hall in 1810 and learn about the fur trade from David Thompson & Charlotte Small in a short play! After a visit to the trading post, participants are outfitted in snowshoes (weather dependant) and team up to collect furs for Hudson Bay Company or Northwest Company before bringing furs back to the trading post to barter their furs for dry goods, based on the “made beaver”



Location: Pembina Nordic Centre

When: November to January

How Long? 2 hours

of Participants: 20 to 25

Age: Grade 4 - 7



The Wonders of Wetlands



An engaging and immersive, hands-on two hour program in a wetlands setting! Participants participate in pond dipping, do uplands observations, measure abiotic factors and more, identify various fauna and flora in a pond ecosystem.

Participants must be dressed appropriately, wear rubber boots and bring writing materials.



Location: Eagle Point Provincial Park, Blue Rapids Prov. Rec. Area or suitable pond in your neighbourhood.

When: Mid May to end of September

How Long? 1 1/2 to 2 hours

of Participants: 20 to 25

Age: Grade 5



Grade 4 to 6

Wonders of Wetlands/ Reclamation Study with Secure Energy



We partner with Secure Energy to engage students in a wetlands experience plus a reclamation site tour with ground water testing! Topics include wetlands ecosystems, biotic and abiotic testing, human impacts, reclamation, ground water health and chemistry .

Participants must be dressed appropriately, wear rubber boots and bring writing materials.



Location: Secure Energy's Reclamation Site (southwest of Drayton Valley)

When: Mid May to end of September (limited number of dates available)

How Long? 9:30 am to 2:00 pm

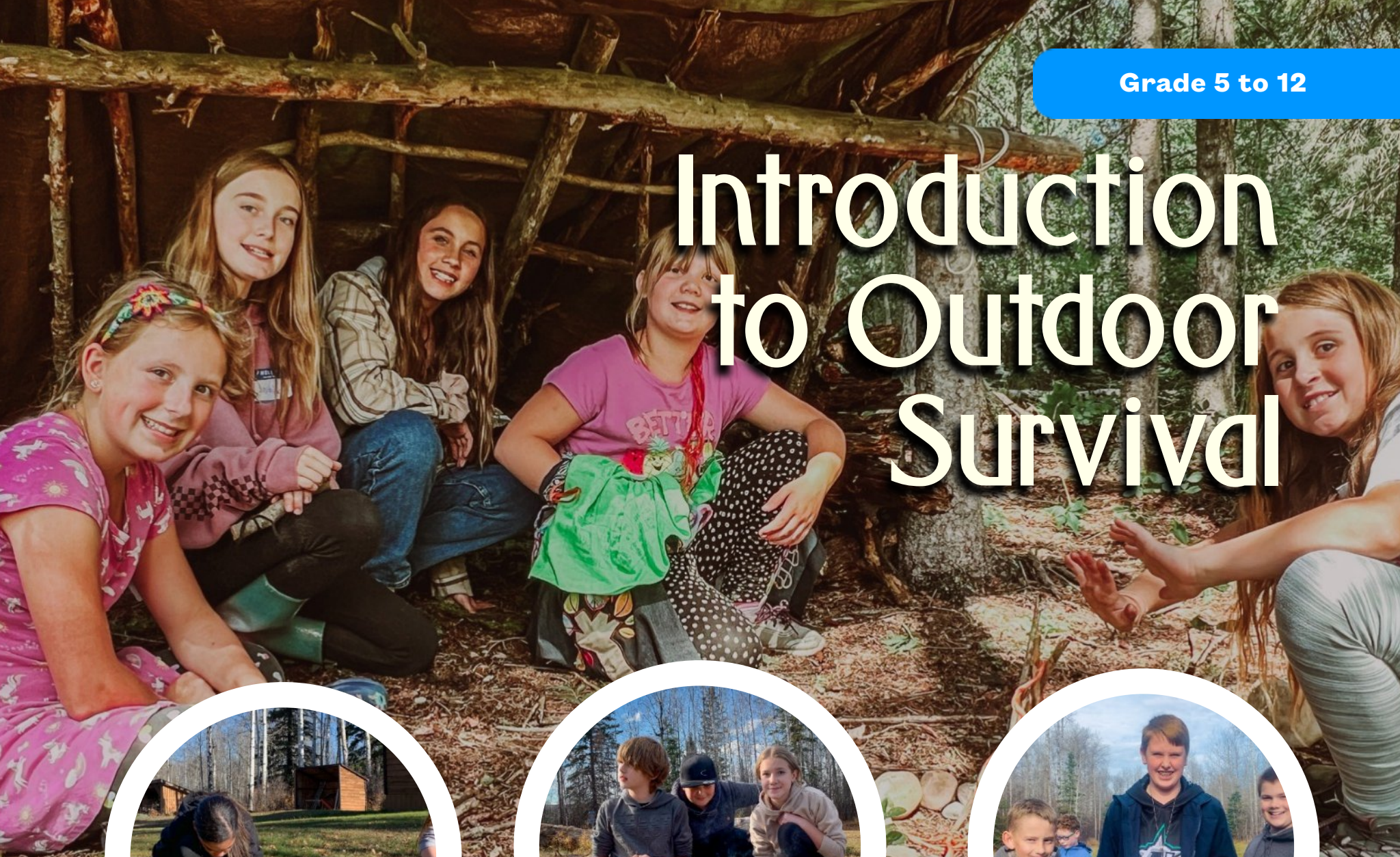
of Participants: 50

Age: Grade 5



SECURE ENERGY

Introduction to Outdoor Survival



In this half day program, we teach participants how to take personal responsibility in trip planning and preparation, even on short hikes. Participants try their hand at fire lighting with flint & steel, learn basic knife skills and work in teams to build emergency shelters. A hike may be added to make this program longer.

Participants must have closed toe shoes and long pants for this program.

Location: Outdoors at the Pembina Nordic Centre

When: Year Round

How Long? 1 1/2 to 2 hours

of Participants: 25 or less

Age: Grade 6 and up





Wilderness Primer



Book any or all of these modules for your Outdoor Education classes. Participants experience and gain confidence in activities connected to hiking, camping and backpacking. Most of the modules are outdoors. Some modules* are suitable for older participants (junior high students).

MODULES

- 1. Gear & Preparedness
- 2. Woods Travel 1 - Snowshoe
- 3. Woods Travel 2 - Hike
- 4. Navigation & Orienteering
- 5. Bears, Bugs & Big Cats*
- 6. Knots & Shelters
- 7. Camp Skills 1
Fire Starters & Fire Lighting
- 8. Camp Skills 2
Camp Tools*
- 9. Outdoor Cooking & Hygiene
- 10. Packing & Setting Up Camp

Substitutions:

Team Challenges & Predator-Prey



Location: Pembina Nordic Centre or your location.

When: May to September

Each module is about 1 1/2 hours

of Participants: 25

Age: Grade 6 to 12

Team Challenges



Participants collaborate to achieve common goals, solve problems and make decisions in response to challenges. This program includes a variety of hands-on activities designed to get youth to think outside the box, to work together for a common goal and to build relationships. Creativity is encouraged!

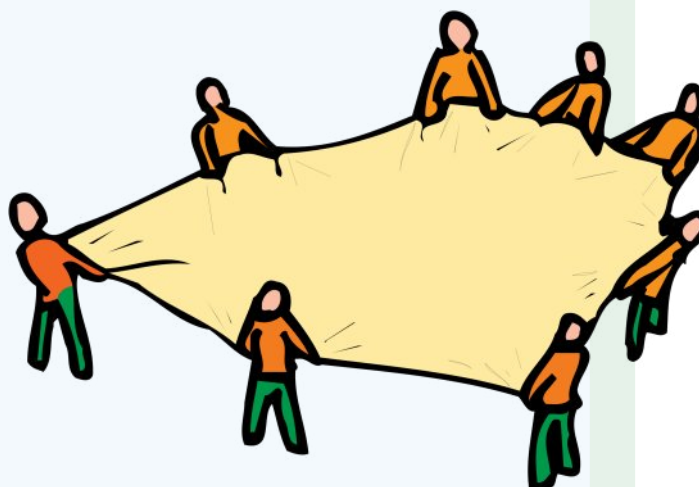
Location: Outdoors!

When: Year Round

How Long? 1 to 1 ½ hours

of Participants: 25

Age: Grade 5 and up.



Trees & Forests

With the help of Eagle Point staff, participants explore several self guided stations in a mixed woods forest. They will visit tree identification stations (dichotomous key and leaf comparison), a timber cruising plot, a lumberjack station and document signs of wildlife. Participants hone their observation and math skills, use measuring and comprehension skills in a natural setting while learning about outdoor careers!



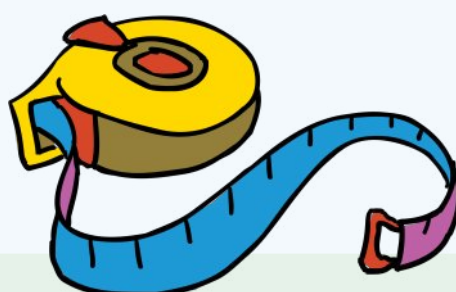
Location: Pembina Nordic Centre or Willey West Campground

When: May to September

How Long? 2 Hours

of Participants: 50

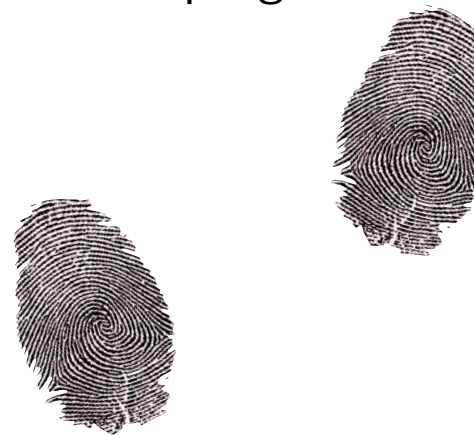
Age: Grade 6



Evidence & Investigation

Crime scenes abound in Eagle Point Provincial Park!

Participants don their Forest Bureau of Investigation badges, determine which Provincial Park regulations have been broken, collect evidence, eliminate and interview suspects and present their findings in this outdoor “Whodunit?” program.



Location: Pembina Nordic Centre, Willey West Campground or forested location near you.

When: May to September

How Long? 1 1/2 to 2 Hours

of Participants: 25

Age: Grade 6



Action for Energy



We've designed several modules to give teachers and students a variety of ways to delve into climate literacy, energy efficiency, alternative energy sources and greenhouse gas emissions! Games, facility tours, hands-on explorations and a movie featuring local kids and locations are included in this unique program!

MODULES

1 - Climate Literacy Presentation & Solar Oven Construction.

2 - Exploring Energy Efficiencies & Working Solar Panels.

3 - Exploring Circuit Meter Technology in Real Time!

4 - Spangler Sticks and The Action for Energy Game (table top game or giant floor game).

5 - The Action for Energy Movie (YouTube) + 12 Classroom Challenges.

6 - Climate Literacy Presentation & Water Treatment Facility Tour.



Location: Modules 1 to 5 can be done at your school or at the Pembina Nordic Centre. Module 6 is hosted at Drayton Valley's Centre for Water Intelligence.

When: September to June

of Participants: 25

How Long: Each module is 1 to 1 1/2 hours

Age: Grade 5 to 9



Ecology & Biodiversity Study

What is an ecosystem? What type of relationships exist in nature? How do humans impact those relationships? Participants explore the difference between abiotic and biotic factors, dive into symbiotic relationships, niches and food chains. Students will examine disturbed and undisturbed sites to reach a better understanding of biodiversity.



Location: Pembina Nordic Centre, Willey West Campground, natural areas near you.



When: May to September

How Long? 1 1/2 Hours

of Participants: 25

Age: Grade 7



Eagle Point River Study



Explore environment science on the shores of the North Saskatchewan River in Eagle Point Provincial Park! Participants do hands-on water sampling and testing to compare water quality from two locations (upstream and downstream of the water treatment facility). They collect and identify aquatic invertebrates with kick nets. We combine results and analyze the data to see whether the health of the river has been impacted by the treatment plant.

Students should wear rubber boots, bring a pencil & safety glasses!

-  
-  
-  
-  
-  

Location: Willey West Campground.

When: May to September

How Long? 1 1/2 to 2 hours

of Participants: 25

Age: Grade 8

Adult & Family Adventures

Family & Adult



Adult & Family Adventures are designed for adults, organizations or families with older children.

Celebrate birthdays, friendships or motivate your team while spending time in nature!

In addition to our Adult & Family Adventures, Eagle Point-Blue Rapids Parks Council hosts several free annual events and activities each year to designed to get all ages outdoors in nature!

Check our Events Calendar for event updates at www.epbrparkscouncil.org/events/

Annual Events & Activities

FIRE & ICE FESTIVAL

Family Day Weekend



EAGLE POINT BIRD COUNT

2nd Saturday in May



EDUCATIONAL EVENTS

Summer



GUARDIANS OF THE PARKS SUMMER DAY CAMP

July



PUMPKIN WALK

Thursday before Halloween



TWINKLE TRAIL

Week before Christmas



Book an Adventure!

Guided Hike or Snowshoe

Hike or snowshoe with Eagle Point staff!

We'll stop along the way to enjoy a charcuterie board in the forest! We can accommodate all skill levels.

Duration approx. 2 hours.

6 person max.

Contact us for larger groups.

*Hike: \$175 Group Fee
(includes food)*

*Snowshoe: \$250 Group Fee
(includes food & snowshoes)*

Location: Trails in Eagle Point Provincial Park.

When? Seasonal, Year Round.

Family & Adult



Photo supplied Alder photographic



Family & Adult



Guided Nature Walk & Nature Journalling

This 1 to 2 hour walk gets you closer to nature while exploring the flora & fauna of our local forests. We will discover edible plants & fungi while learning about local natural history.

*\$100 Group Fee for Guided Nature Walk
(6 person max)*

Turn your walk into a Nature Journalling Session and find your inner Zen.

\$150 Group Fee for Hike & Journaling

Location: Eagle Point Provincial Park

When? May to September

Family & Adult

Team Building



Reward or motivate your organization with a half day or full day of outdoor activities, designed to get your staff or organization working together while thinking outside the box! Choose fun sessions to build group solidarity and creativity! Disc Golf, Capture the Flag, Human Knot, Outdoor Survival Skills, Team Challenges, Short Hikes, Outdoor Cooking & More!

Contact us for a FREE consultation and pricing.

Location: Pembina Nordic Centre

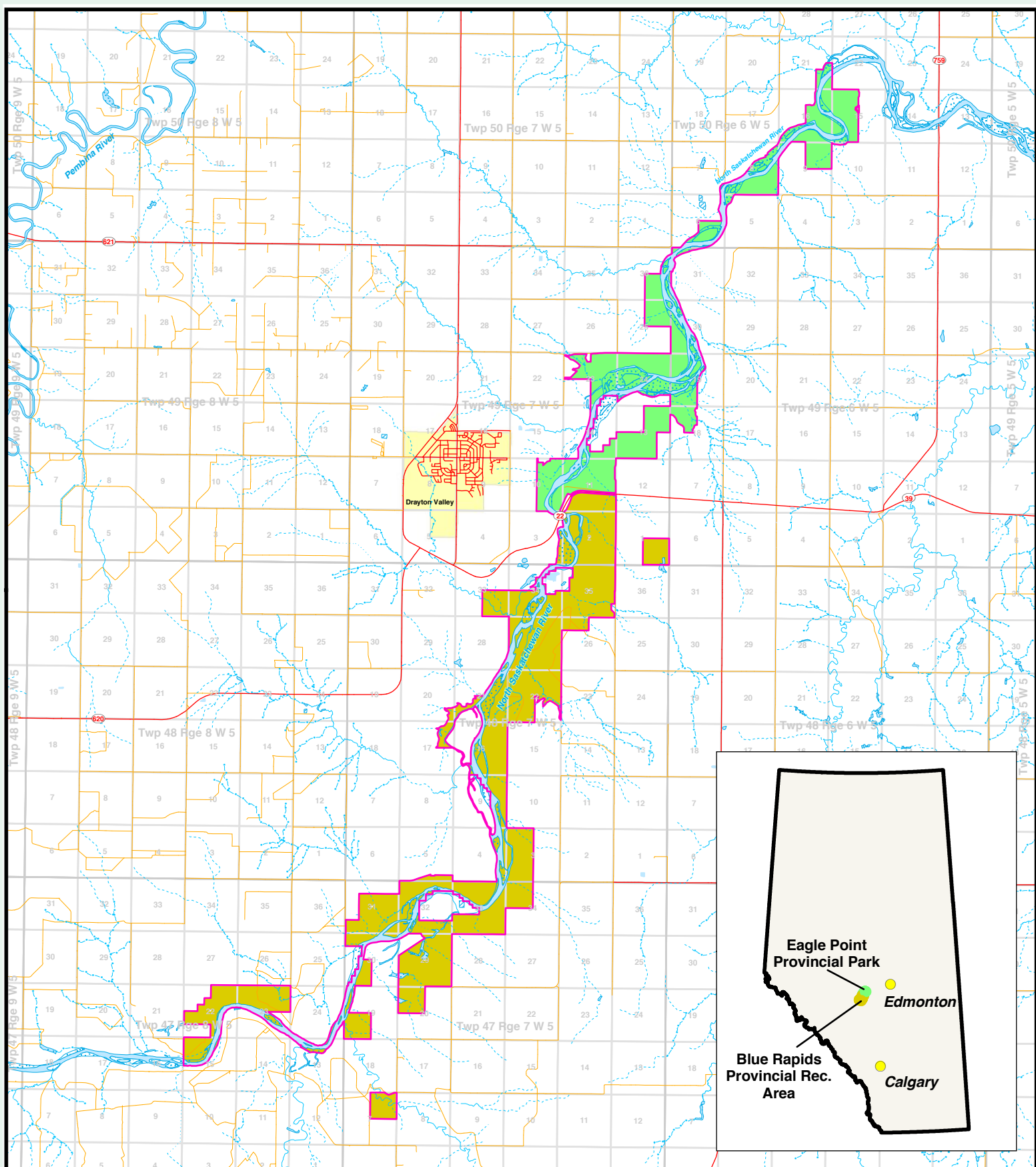
When: Year Round (except August)

How Long? 1/2 Day or Full Day

Contact us for pricing at outreach@epbrparksCouncil.org

Notes

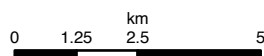




DEPARTMENT OF TOURISM, PARKS, RECREATION and CULTURE
Parks, Conservation, Recreation and Sport Division

Eagle Point Provincial Park and Blue Rapids Provincial Recreation Area

- Eagle Point Provincial Park
- Blue Rapids Provincial Recreation Area



Alberta
TOURISM, PARKS,
RECREATION AND CULTURE

Map produced August 31, 2007.
Base features digital map data supplied by
Resource Information Management Branch, ASRD.



Box 7355
Drayton Valley, Alberta
T7A 1S6
780-898-7275

Email: outreach@epbrparks council.org

Website: www.epbrparks council.org