



# Program Guide for Outdoor & Environmental Learning Experiences

General Interest

Kindergarten to Grade 3

Grade 4 to 6

Grade 5 to 12

Family & Adult

Snowshoe Rentals

Parks Information



**EAGLE POINT  
BLUE RAPIDS**  
parks council



# Our Sponsors



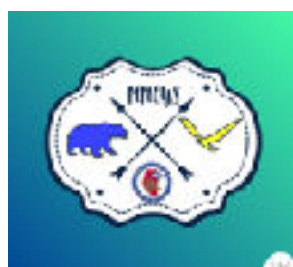
Weyerhaeuser



Intercon Messaging  
Live Answer. Reliable Solutions.



KEYERA



Drayton  
Sand & Gravel



Byram  
Family  
Foundation



The generosity of our sponsors allows us to provide free programs to children and youth!

## Thank You!





# Eagle Point-Blue Rapids Parks Council

We are a community based, not-for-profit organization, governed by a Voluntary Board of Directors. Our board is comprised of recreational organizations, government and industry representatives who work together to ensure that we meet our mission and vision. Thank you to all our dedicated volunteers for their commitment!

## **Our Mission**

To enhance and protect the Eagle Point Provincial Park and the Blue Rapids Provincial Recreation Area by working collaboratively with our partners to implement innovative park planning, funding and management for the benefit and public enjoyment of current and future generations.

## **Our Vision**

A sustainable balance of diverse recreational opportunities and environmental protection for all to enjoy in the Eagle Point Provincial Park and Blue Rapids Provincial Recreation Area.

## Contact Us

Eagle Point-Blue Rapids Parks Council  
Box 7355  
Drayton Valley, Alberta  
T7A 1S6  
Office: 780-898-7275

Sandra Bannard (Executive Director)  
[sandra@epbrparksCouncil.org](mailto:sandra@epbrparksCouncil.org)

Kathy Schwengler (Education & Outreach Coordinator)  
[outreach@epbrparksCouncil.org](mailto:outreach@epbrparksCouncil.org)

Erin Klatt (Education Assistant)  
[education@epbrparksCouncil.org](mailto:education@epbrparksCouncil.org)



# Message from Eagle Point-Blue Rapids Parks Council Staff



## **Think...Grow...Go OUTSIDE!**

Welcome to the Eagle Point-Blue Rapids Parks Council Program Guide! We create and facilitate positive, hands-on, outdoor experiences for youth and adults in our beautiful park settings! With community feedback and consultation, our Environmental and Outdoor Education program has grown and evolved into a high-demand resource!

We are excited to share our new education strategy called “Think-Grow-Go OUTSIDE.” In this post pandemic world, we want to support individuals by offering Nature based adventures that reconnect them to each other as well as to “Nature’s Community”.

### **The 5 Pillars of “Think...Grow...Go OUTSIDE”**

- **Technology Free**



Many of our sessions leave technology behind to enhance an immersive experience in the delights of the natural world with no electronic interruptions.

- **Mental Wellness**



Our outdoor programs, surrounded by Mother Nature, lead participants of all ages on a path to better mental and physical health.

- **Team Work**



We provide fun opportunities to build skills in cooperation, creativity and collaboration - a benefit to both youth and adults.

- **Strengthening Community**



We strive to help our participants to build community connections in the human realm as well as with their natural world.

- **Empowerment**



Many of our Outdoor Education sessions provide experiences that help participants feel a sense of empowerment while developing self confidence and resilience.

Let the Parks Council help your young people be awakened to the beauty and wonder of our natural world, by becoming familiar with the people, animals, plants and assets that surround them.

*When you know and love something, you protect and cherish it!*

*Our hope is to inspire people to “Think...Grow...GO OUTSIDE!”*

Sandra Bannard, Executive Director  
Kathy Schwengler, Education & Outreach Coordinator  
Erin Klatt, Education Assistant





# BOOK A PROGRAM

## ONLINE

COMPLETE THE BOOKING FORM:  
COMPLETE THE ONLINE BOOKING  
REQUEST AT [HTTPS://  
WWW.EPBRPARKSCOUNCIL.ORG/  
EDUCATION/KIDS-AND-YOUTH-  
BOOKINGS//](https://www.epbrparkscouncil.org/education/kids-and-youth-bookings//)

## EMAIL

SEND US AN EMAIL, REQUESTING A  
PROGRAM. INCLUDE SPECIFICS - HOW  
MANY PARTICIPANTS, DESIRED DATE  
AND TIME, ETC.  
[OUTREACH@EPBRPARKSCOUNCIL.ORG](mailto:OUTREACH@EPBRPARKSCOUNCIL.ORG)

## CALL US

CALL US WITH YOUR REQUEST -  
EAGLE POINT-BLUE RAPIDS PARKS  
COUNCIL OFFICE PHONE NUMBER:  
**780-898-7275.**

- ◆ **CHOOSE A PROGRAM:** Use this guide to choose an age/grade appropriate program for your participants.
- ◆ **PICK A DATE and TIME:** Programs run from one hour to a full day. Program availability depends on the season.
- ◆ **CHOOSE A LOCATION:** Will you bring your group to a location in the parks or should we visit your location?



# Program Guide



- \* **General Interest Programs**
- \* **Kindergarten to Grade 3 Programs**
- \* **Grade 4 to 6 Programs**
- \* **Grade 5 to 12 Programs**
- \* **Family & Adult Programs**
- \* **Snowshoe Rentals**
- \* **Parks Information**



## FREE GENERAL INTEREST PROGRAMS FOR KIDS & YOUTH

PROGRAM	CONNECTIONS	SEASONS AVAILABLE	LOCATION	PAGE
ALL ABOUT BIRDS	OBSERVATIONS IN NATURE, LIFE SCIENCE, HOBBIES, WELLNESS, NATURAL HISTORY OF ALBERTA	MAY TO SEPTEMBER	Flexible	10
TRACKS AND SCAT	SUITABLE FOR KIDS AND FAMILIES - OBSERVATIONS IN NATURE, LIFE SCIENCE, NATURAL HISTORY OF ALBERTA	SUITABLE IN MONTHS WITH SNOW	Combination of indoor presentation and outdoor exploration.	11
GEOCACHING	MAP READING SKILLS, GPS SKILLS, PHYSICAL EDUCATION, HEALTH & WELLNESS	YEAR ROUND	Willey West Campground	12
INTERPRETIVE WALK (OPTION TO ADD ON NATURE JOURNALS) WITH EAGLE POINT STAFF	PLANT & TREE IDENTIFICATION, USE OF PLANTS BY HUMANS (HISTORICAL & CURRENT), WELLNESS, NATURAL HISTORY OF ALBERTA, STEWARDSHIP	YEAR ROUND	Parks Trails	13
NATURE CRAFTS	ART, MINDFULNESS, OUTDOORS	APRIL TO OCTOBER	Pembina Nordic Centre	14
OUTDOOR GAMES (INCLUDES PREDATOR-PREY)	PHYSICAL EDUCATION, HEALTH & WELLNESS, LIFE SCIENCE, NATURAL HISTORY OF ALBERTA	YEAR ROUND	School grounds, Pembina Nordic Centre, etc.	15
FURS, SKULLS AND ANTLERS	SUITABLE FOR KIDS AND FAMILIES - LIFE SCIENCE, TRAPPING INDUSTRY (HISTORICAL AND CURRENT), CURRICULUM LINKS - SCIENCE, ANIMAL ADAPTATIONS	YEAR ROUND	Indoor locations including the Pembina Nordic Outdoor Education Centre.	16
OWL DISCOVERY	GRADE 3 SCIENCE (ANIMAL LIFE CYCLES), NATURAL HISTORY OF ALBERTA	YEAR ROUND	Indoor program can take place at your classroom or at the Pembina Nordic Centre's Outdoor Education Centre.	17
CITIZEN SCIENCE PROJECT	COMMUNITY, ENVIRONMENTAL EDUCATION, STEWARDSHIP, LIFE SCIENCE, NATURAL HISTORY OF ALBERTA	YEAR ROUND	In Eagle Point Prov. Park, Blue Rapids Provincial Rec. Area or via visit to your classroom.	18

## FREE PROGRAMS FOR KINDERGARTEN TO GRADE 3



PROGRAM	CURRICULUM LINKS	SEASONS AVAILABLE	LOCATION	PAGE
SCIENCE OF SNOW/WINTER ADAPTATIONS	KINDERGARTEN ( ENVIRONMENT & COMMUNITY AWARENESS), GRADE 1 SCIENCE (SEASONAL CHANGES, NEEDS OF PLANTS AND ANIMALS)	MID NOVEMBER TO EARLY MARCH (SNOW IS A NECESSITY FOR THIS PROGRAM)	Mix of classroom and school yard activities.	19
NATURE'S NOTIONS	KINDERGARTEN (CREATIVE EXPRESSION & ENVIRONMENT & COMMUNITY AWARENESS), GRADE 1 SCIENCE (CREATING COLOUR, SEASONAL CHANGES, NEEDS OF PLANTS AND ANIMALS)	MAY, JUNE, SEPTEMBER	Near your school or within our parks.	20
MARVELLOUS MISUNDERSTOOD BATS	GRADE 2 SCIENCE: (SMALL CRAWLING AND FLYING ANIMALS) GRADE 3 SCIENCE: (ECHOLOCATION)	YEAR ROUND CLASSROOM BASED PROGRAM	Classroom or Pembina Nordic Outdoor Ed. Centre	21
BUGOLOGY	GRADE 2 SCIENCE (SMALL CRAWLING AND FLYING ANIMALS)	MID MAY, JUNE AND SEPTEMBER	Near your school or within our parks.	22
EXPLORING CARDINAL DIRECTIONS	GRADE 2 SCIENCE (MAGNETISM)	SEPTEMBER, MID APRIL TO JUNE	Discovery Park, Drayton Valley	23





## FREE PROGRAMS FOR GRADE 4 TO 6

PROGRAM	CURRICULUM LINKS	SEASONS AVAILABLE	LOCATION	PAGE
TREELYMPICS	GRADE 4 SCIENCE (PLANT GROWTH & CHANGE)	MAY, JUNE, SEPTEMBER	School yard or Pembina Nordic Centre	24
NATURE'S RECYCLERS	GRADE 4 SCIENCE (WASTE IN OUR WORLD)	MAY, JUNE, SEPTEMBER	Wooded area near your school or within our parks	25
METIS TRADITIONS	GRADE 4 SOCIAL STUDIES (THE STORIES, HISTORIES AND PEOPLE OF ALBERTA), GRADE 5 (HISTORIES AND STORIES OF WAYS OF LIFE IN CANADA)	MAY, JUNE	Pembina Nordic Centre	26
FUR TRADE EXPERIENCE	GRADE 4 SOCIAL STUDIES (THE STORIES, HISTORIES AND PEOPLE OF ALBERTA), GRADE 5 (HISTORIES AND STORIES OF WAYS OF LIFE IN CANADA)	JANUARY	Pembina Nordic Centre	27
WONDERS OF WETLANDS	GRADE 5 SCIENCE (WETLAND ECOSYSTEMS)	MAY, JUNE, SEPTEMBER	Pond located near your school or within Eagle Point Provincial Park	28
WONDERS OF WETLANDS/ RECLAMATION STUDY WITH SECURE ENERGY	GRADE 5 SCIENCE (WETLAND ECOSYSTEMS)	SPECIFIC DATES IN MAY, JUNE OR SEPTEMBER	Secure Energy Reclamation Site southwest of Drayton Valley, AB	29

## FREE PROGRAMS FOR GRADE 5 TO 12

PROGRAM	CURRICULUM LINKS	SEASONS AVAILABLE	LOCATION	PAGE
INTRODUCTION TO OUTDOOR SURVIVAL	ENVIRONMENTAL & OUTDOOR EDUCATION	SEPTEMBER TO JUNE	Pembina Nordic Centre	30
WILDERNESS PRIMER (10 DIFFERENT SESSIONS AVAILABLE)	ENVIRONMENTAL & OUTDOOR EDUCATION	SEPTEMBER TO JUNE	School grounds, Pembina Nordic Centre, etc.	31
OUTDOOR LEADERSHIP	ENVIRONMENTAL & OUTDOOR EDUCATION	YEAR ROUND	School grounds, Pembina Nordic Centre, etc.	32
TREES & FORESTS	GRADE 6 SCIENCE (TREES & FORESTS)	MAY, JUNE, SEPTEMBER TO EARLY OCTOBER		33
EVIDENCE & INVESTIGATION	GRADE 6 SCIENCE (EVIDENCE & INVESTIGATION)	SEPTEMBER, OCTOBER, MID APRIL TO JUNE	Wooded area near your school or within our parks	34
ACTION FOR ENERGY (SEVERAL SESSIONS TO CHOOSE FROM)	GRADE 5 - ELECTRICITY & MAGNETISM, GRADE 7 - NUTRIENT CYCLES, ENVIRONMENTAL MANAGEMENT, GRADE 9 - ELECTRICAL PRINCIPLES & TECHNOLOGIES, SCIENCE 10, 14 - SOCIAL & ENVIRONMENTAL CONTEXT OF SCIENCE & TECHNOLOGY	SEPTEMBER TO JUNE	Classroom, Pembina Nordic Centre, Drayton Valley Water Treatment Plant	35
ECOLOGY & BIODIVERSITY	GRADE 7 SCIENCE (INTERACTIONS & ECOSYSTEMS)	SEPTEMBER, OCTOBER, MAY, JUNE.	To be determined based on the project's scope.	36
EAGLE POINT RIVER STUDY	GRADE 8 SCIENCE (FRESH WATER ECOSYSTEMS)	MAY, JUNE, SEPTEMBER	Willey West Campground or other river shoreline.	37
CAREER AND TECHNOLOGY FOUNDATIONS AND STUDIES	GRADE 5 TO 12 CTF AND CTS	SEPTEMBER TO JUNE	Pembina Nordic Centre and other natural areas.	38



## FEE BASED PROGRAMS FOR ADULTS OR FAMILIES

PROGRAM	Summary	SEASONS AVAILABLE	LOCATION	PAGE
BACKPACKING 101	All about how to pack for an overnight backcountry trek.	March to October	Pembina Nordic Centre	40
OUTDOOR SURVIVAL EXPERIENCE	Basic survival skills for adults!	Year Round	Pembina Nordic Centre	40
GUIDED SNOWSHOE OR HIKE WITH EAGLE POINT STAFF	Guided snowshoe or hike with Eagle Point Staff.	Year Round	Any lightly used trail or snow covered area.	41
INTERPRETIVE WALK /NATURE JOURNALS	Guided hike with Eagle Point Staff , exploring the Parks' flora & fauna. Optional Nature Journal session includes materials!	May to September	Parks Trails	41
TEAM BUILDING	Activities designed for organizations and businesses who want to boost staff morale and wellness.	September to May	Parks Location of your choice	42

### Snowshoe Rentals

# Snowshoe Rentals



Eagle Point-Blue Rapids Parks Council has an inventory of over 50 pairs of snowshoes! Rent them for your school or organization.

We have snowshoes for anyone from 40 to 250 pounds (18 kg to 115 kg).

Contact our office for more information on snowshoe rentals at 780-898-7275.





# All About Birds



In this introductory program, kids learn about birds and bird habitat.

They'll explore feathers, eggs, nests and bird sounds with hands on activities and go on a bird hunt with real binoculars. This program has an outdoor component - dress for the weather!



Location: Eagle Point Provincial Park or your location.\*

When: May to September

How Long? 1 to 1 1/2 hours

# of Participants: 25 or less

Age: Suitable for Kindergarten to Grade 3





# Tracks n' Scat

Kids can learn to read the forest's stories by honing their observation skills.

Participants develop those skills in this introductory program.

We begin indoors with a presentation and a hands-on exploration of replica tracks and scat before heading out on the trails in search of actual evidence of animals on location.

*Dress to get messy and be prepared for an outdoor excursion!*



Location: Pembina Nordic Centre or your location.\*

When: September to June

How Long? 1 to 1 ½ hours

# of Participants: 20 to 25

Age: All ages





# An Introduction to Geocaching



What *is* geocaching? Get started on this world wide scavenger hunt with our Introduction to Geocaching session. We'll learn about finding geocaches, hiding geocaches and geocaching etiquette. Electronic device required (cell phone or GPS). Presentation can include hunting for actual geocaches.



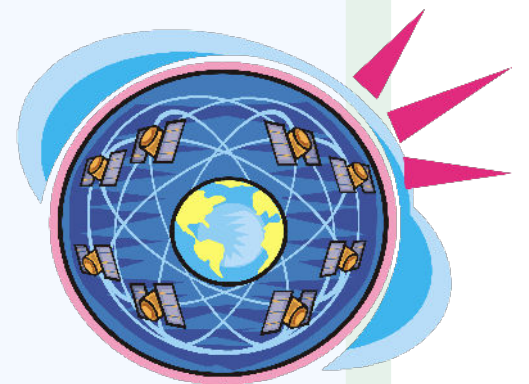
Location: Willy West Campground or classroom.

When: May to October

How Long? 20 minutes to 1 hour

# of Participants: 25 or less

Age: All ages





# Interpretive Walk & Nature Journals

Guided interpretive walk with Eagle Point staff. Explore the flora and fauna of our local wild areas to build a greater connection to our natural world. We touch on historical and current plant uses while learning about local natural history.

Combine the Interpretive Walk with an optional Nature Journalling session. We can supply the journals!



Location: Eagle Point Provincial Park

When: Year Round

How Long? 1 to 2 hours

# of Participants: 20 to 25

Age: 8 and up





# Nature Crafts

Collect your art supplies from nature's art store! Leaves, sticks, grass, moss, pebbles, lichens and pine cones can be incorporated into fun craft projects, wall hangings or paintings!



Location: Pembina Nordic Centre or other natural area.

When: Year round

How Long? 1 ½ to 2 hours

# of Participants: 20 to 25

Age: All ages



# Outdoor Games



Outdoor games to fill an hour! Get your kids or organization outside for some fresh air, team sports and physical activity! Capture the Flag, Lawn Games, Disc Golf, Predator-Prey and more!

Location: Eagle Point Provincial Park or your location.\*

When: Year Round

How Long? 1 to 1 1/2 hours

# of Participants: 20 to 25

Age: All Ages





# Furs, Skulls & Antlers



All ages loves this program! Participants discover local mammals, their behaviours and habitats while experiencing real furs, skulls, antlers and bones! We discover how to tell whether a skull belongs to a carnivore or herbivore by its teeth shape. Kids check out a moose skeleton and figure out how the bones fit together.



Location: Pembina Nordic Centre or your location\*

When: Year Round

How Long? 1 to 1 1/2 hours

# of Participants: 20 to 25

Age: All Ages

**Miller's**  
Animal Control Management





# Owl Discovery

Owls are beautiful and interesting! Join Eagle Point staff for a presentation on Alberta's owl species. We focus owl adaptations and habitats and do investigative science with a hands-on owl pellet dissection to discover what they've been feeding on. This program can be adapted for different age groups.



Location: Your classroom or Pembina Nordic Centre.

When: Year round

How Long? 1 1/2 hours

# of Participants: 20 to 25

Age: Grade 3 and up.

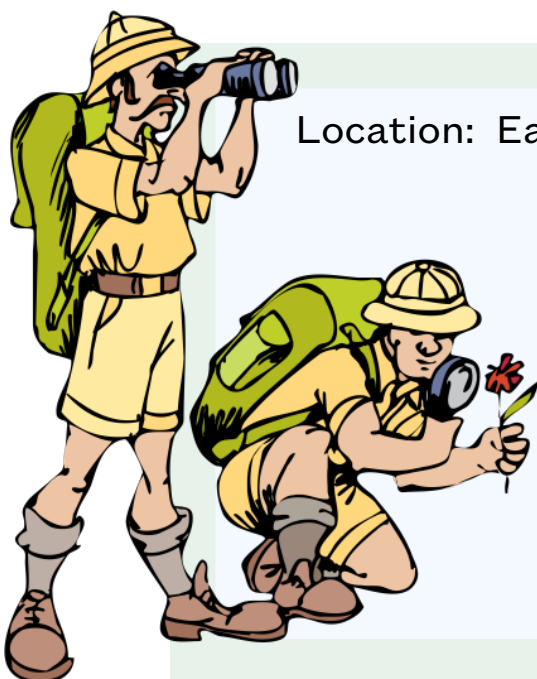




# Citizen Science Project



Want to do a short term or long term citizen science project? We can help you with resources, staff and guidance. Citizen science is a great way for kids and adults to contribute to a greater cause in their community or globally. Bioblitzes, bird counts, insect counts, plant surveys, bat surveillance, shore line clean up or tree planting are some examples of ways to get your class or organization involved in an exciting and fulfilling project!



Location: Eagle Point Provincial Park or Blue Rapids Provincial Recreation Area

When: Year Round

How Long? n/a

# of Participants: n/a

Age: Grade 4 and up



# The Science of Snow/Winter Adaptations



Participants explore snowflake formation and shapes and learn how humans and animals have adapted to our snow covered places. Kids play a snowflake game, build mini quinzees and explore animal connections with the Lynx & Hare game. We have a shorter 45 minute program that focused on Winter Adaptations of Alberta's wild animals, which is completely outdoors.

Location: Your classroom and school yard or Pembina Nordic Centre.

When: Winter months

How Long? 1 1/2 hours

# of Participants: 25 or less

Age: Kindergarten or Grade 1





# Nature's Notions

This program gets our Grade 1's out in nature, exploring flora and fauna through colours, smells, textures and sounds. We believe kids who develop a strong connection to nature become adults who continue to have an active interest in our natural world.

*Activities may include:*

- \* *Colour Safari*
- \* *Nature Walk*
- \* *Nature Crafts*
- \* *Blind Walk*
- \* *Tracks n Scat mini program*
- \* *All About Birds mini-program*



Location: Eagle Point Provincial Park.

When: May to September

How Long? 1 1/2 to 2 hours

# of Participants: 20 to 25

Age: Grade 1





# Marvellous Misunderstood Bats



Alberta's bats are an important part of our ecosystems. They play a great role in insect management in Canada, but globally they help pollinate many food crops. In this session, we debunk many myths about bats, learn about bats as insect eaters and pollinators, talk about stewardship and play some interactive games to explore echolocation and bat challenges!

*Photo credit: Jason Headley /WCS Canada*



Location: Pembina Nordic Centre or your classroom

When: Year Round

How Long? 1 1/2 hours

# of Participants: 20 to 25

Age: Grade 2





# Bugology



Let’s embrace the wonderful world of bugs in this fun outdoor session for kids! We learn about insects and spiders while exploring forest, pond and meadow insects and spiders! Activities include woodland bug safari, butterfly meadows and a close look at pond dwellers.



Location: Eagle Point Provincial Park or a suitable natural area in your neighbourhood.

When: May to September

How Long? 1 1/2 hours

# of Participants: 25 or less

Age: Grade 2





# Exploring Cardinal Directions



Kids explore cardinal directions, landmarks and pacing through games and discussion, then move on to learn basic compass skills before reading a map to find their way through a scavenger hunt! North, East, South and West!



Location: Discovery Park, Drayton Valley or your location.

When: May to October

How Long? 1 to 1 1/2 hours

# of Participants: 20 to 25

Age: Grade 2 to 3





# Treelympics



This exciting session gets participants outdoors, competing with trees in feats of endurance, strength and speed while incorporating tree “terminology” like xylem, phloem and photosynthesis. Games incorporate concepts like the movement of nutrients and water through tree tissues, seed dispersal, etc. Treelympics is one of our most popular sessions! This session works best on warm days!



Location: Outdoors!

When: Mid May to end of September

How Long? 1 ½ hours

# of Participants: 20 to 25

Age: Grade 4





# Nature's Recyclers



Using observations and soil sampling methods, participants explore two different habitats, comparing “nature’s recyclers” they find in both. Secondary activities include decomposer bingo and a study of decomposers found in garbage.

Location: Forested location in the Parks or your forested location.

When: May to September

How Long? 1 1/2 to 2 hours

# of Participants: 25 or less

Age: Grade 4







# Metis Traditions

Participants spend a day immersed in Indigenous culture with Metis Elders and Knowledge Keepers. Activities include Smudging Ceremony, Tipi Teachings, Medicine Wheel, Talking Stick and Metis Lifestyles.

Lunch provided by EPBR Parks Council and Pembina Pipeline.

Due to the nature of this program, we have limited availability/dates.



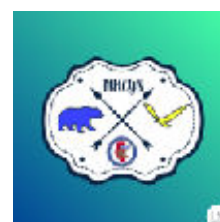
Location: Pembina Nordic Centre

When: May to September (limited number of dates available)

How Long? 9:30 am to 2:30 pm

# of Participants: 60

Age: Grade 4





# Fur Trade Experience



A brand new program for us!

Participants visit the remote trading post of Boggy Hall in 1810 and learn about the fur trade from David Thompson & Charlotte Small! After a visit to the trading post, participants are outfitted in snowshoes and team up to collect furs for Hudson Bay Company or Northwest Company before bringing furs back to the trading post to see the value as bartered for dry goods.



Location: Pembina Nordic Centre

When: January

How Long? 2 hours

# of Participants: 20 to 25

Age: Grade 4 - 5

*(Trapper's cabin pictured above is not Boggy Hall)*



# The Wonders of Wetlands



An engaging and immersive, hands-on two hour program in a wetlands setting! Participants participate in pond dipping, do uplands observations, measure abiotic factors and more, identify various fauna and flora in a pond ecosystem.

*Participants must be dressed appropriately, wear rubber boots and bring writing materials.*



Location: Eagle Point Provincial Park, Blue Rapids Prov. Rec. Area or suitable pond in your neighbourhood.

When: Mid May to end of September

How Long? 1 1/2 to 2 hours

# of Participants: 20 to 25

Age: Grade 5





Grade 4 to 6

# Wonders of Wetlands/ Reclamation Study with Secure Energy



We partner with Secure Energy to engage students in a wetlands experience plus a reclamation site tour with ground water testing! Topics include wetlands ecosystems, biotic and abiotic testing, human impacts, reclamation, ground water health and chemistry .

*Participants must be dressed appropriately, wear rubber boots and bring writing materials.*



Location: Secure Energy's Reclamation Site (southwest of Drayton Valley)

When: Mid May to end of September (limited number of dates available)

How Long? 9:30 am to 2:00 pm

# of Participants: 50

Age: Grade 5



**SECURE  
ENERGY**



# Introduction to Outdoor Survival



This program emphasizes that even on short hikes one must take personal responsibility in trip planning and preparation. Participants try their hand at fire lighting with flint & steel, learn basic knife skills and work in teams to build emergency shelters.

*Participants must have closed toe shoes and long pants for this program.*

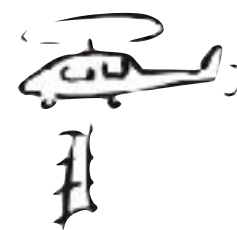
Location: Outdoors at the Pembina Nordic Centre

When: Year Round

How Long? 1 1/2 to 2 hours

# of Participants: 25 or less

Age: Grade 6 and up





Grade 5 to 12



# Wilderness Primer

Book any or all of these modules for your Outdoor Education classes. Participants experience and gain confidence in activities connected to hiking, camping and backpacking. Most of the modules are outdoors. Some modules\* are suitable for older participants (junior high students).

## MODULES

1. *Gear & Preparedness*
2. *Woods Travel 1 - Snowshoe*
3. *Woods Travel 2 - Hike*
4. *Navigations & Orienteering*
5. *Bears, Bugs & Big Cats\**
6. *Shelters & First Aid*
7. *Camp Skills 1 - Fire Starters & Fire Lighting*
8. *Camp Skills 2 - Camp Tools\**
9. *Outdoor Cooking & Hygiene*
10. *Packing & Setting Up Camp*

*Substitutions: Knots, Predator-Prey*

Location: Pembina Nordic Centre, Willey West Campground or your location.

When: May to September

Each module is about 1 1/2 hours

# of Participants: 25

Age: Grade 6 to 12





# Outdoor Leadership



Participants collaborate to achieve common goals, solve problems and make decisions in response to challenges. This program includes a variety of hands-on activities designed to get youth to think outside the box, to work together for a common goal and to build relationships. Creativity is encouraged!

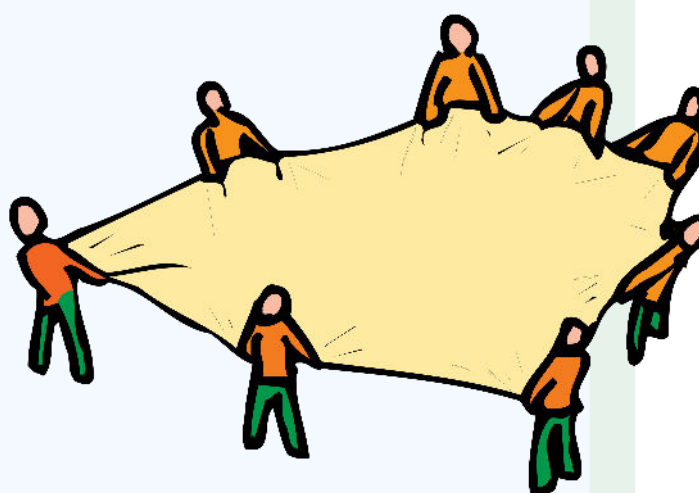
Location: Outdoors!

When: Year Round

How Long? 1 to 1 ½ hours

# of Participants: 25

Age: Grade 5 and up.





# Trees & Forests

With the help of Eagle Point staff, participants explore several self guided stations in a mixed woods forest. They will visit tree identification stations (dichotomous key and leaf comparison), a timber cruising plot, a lumberjack station and document signs of wildlife. Participants hone their observation and math skills, use measuring and comprehension skills in a natural setting while learning about outdoor careers!



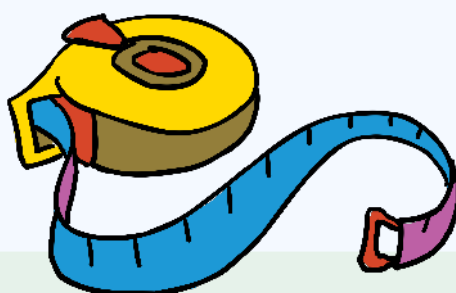
Location: Pembina Nordic Centre or Willey West Campground

When: May to September

How Long? 2 Hours

# of Participants: 50

Age: Grade 6





# Evidence & Investigation

Crime scenes abound in Eagle Point Provincial Park!

Participants don their Forest Bureau of Investigation badges, determine which Provincial Park regulations have been broken, collect evidence, eliminate and interview suspects and present their findings in this outdoor “Whodunit?” program.



Location: Pembina Nordic Centre, Willey West Campground or forested location near you.

When: May to September

How Long? 1 1/2 to 2 Hours

# of Participants: 25

Age: Grade 6





Grade 5 to 12

# Action for Energy



We've designed several modules to give teachers and students a variety of ways to delve into climate literacy, energy efficiency, alternative energy sources and greenhouse gas emissions! Games, facility tours, hands-on explorations and a movie featuring local kids and locations are included in this unique program!

## MODULES

1 - Climate Literacy Presentation & Solar Oven Construction.

2 - Exploring Energy Efficiencies & Working Solar Panels.

3 - Exploring Circuit Meter Technology in Real Time!

4 - Spangler Sticks and The Action for Energy Game (table top game or giant floor game).

5 - The Action for Energy Movie (YouTube) + 12 Classroom Challenges.

6 - Climate Literacy Presentation & Water Treatment Facility Tour.



Location: Modules 1 to 5 can be done at your school or at the Pembina Nordic Centre. Module 6 is hosted at Drayton Valley's Centre for Water Intelligence.

When: September to June

# of Participants: 25

How Long: Each module is 1 to 1 1/2 hours

Age: Grade 5 to 9





# Ecology & Biodiversity Study

What is an ecosystem? What type of relationships exist in nature? How do humans impact those relationships? Participants explore the difference between abiotic and biotic factors, dive into symbiotic relationships, niches and food chains. Students will examine disturbed and undisturbed sites to reach a better understanding of biodiversity.



Location: Pembina Nordic Centre, Willey West Campground, natural areas near you.



When: May to September

How Long? 1 1/2 Hours

# of Participants: 25

Age: Grade 7





# Eagle Point River Study



Explore environment science on the shores of the North Saskatchewan River in Eagle Point Provincial Park! Participants do hands-on water sampling and testing and collect aquatic invertebrates with kick nets. Data is collected and analyzed for two sites on the river (upstream and downstream of the water treatment facility) to compare results and discuss human impact on river quality.

*Students should wear rubber boots, bring a pencil & safety glasses!*



- Location: Willey West Campground or other river shoreline.
- When: May to September
- How Long? 1 1/2 to 2 hours
- # of Participants: 25
- Age: Grade 8



# Career & Technology Foundations & Studies

Grade 5 to 12

Looking for some ideas or help with CTF or CTS programs? Want to get your students outside? We have a number of activities and programs that will tick off those boxes for you. Our facilitator has over 10 years experience teaching a large variety of the WLD, FOR, ENS and HSS modules so you are sure to get some great hands-on experiences for your students. Our outdoor leadership program is a perfect fit for a lot of those CTF learning outcomes too! We are willing to work with teachers to make sure our programs fit your needs.



Location: Pembina Nordic Centre, natural areas near you.

When: September to June

How Long? varies

# of Participants: 25

Age for CTF: Grade 5 to 9, Age for CTS: Grade 10 to 12





# Adult & Family Adventures

Family & Adult



Adult & Family Adventures are designed for adults, organizations or families with older children.

Celebrate birthdays, friendships or motivate your team while spending time in nature!

*In addition to our Adult & Family Adventures, Eagle Point-Blue Rapids Parks Council hosts several free annual events and activities each year to designed to get all ages outdoors in nature!*

Check our Events Calendar for event updates at [www.epbrparkscouncil.org/events/](http://www.epbrparkscouncil.org/events/)



# Backpacking 101

In this 1/2 day session, you will learn the basics of backpacking. We will cover how and what to pack, tenting, sleep systems, backcountry stoves, outdoor cooking, fire starting, water procurement and how to poop in the woods!

*\$250 Group Fee (10 persons max)*

Location: Pembina Nordic Centre  
When? March to October.



Family & Adult

# Outdoor Survival Experience

In this 1/2 day session, you will learn to build a fire with flint & steel, explore open fire cooking, practise basic knife skills, learn various shelter techniques, water procurement, basic knots and navigation.

*\$250 Group Fee (10 persons max)*

Location: Pembina Nordic Centre.  
When? Year Round!



Family & Adult



Family & Adult



Photo supplied Alder photographic

## Guided Hike or Snowshoe

Hike or snowshoe with Eagle Point staff!  
We'll stop along the way to enjoy a charcuterie board in the forest! We can accommodate all skill levels.

Duration approx. 2 hours.  
6 person max.  
*Contact us for larger groups.*

*Hike: \$175 Group Fee  
(includes food)*  
*Snowshoe: \$250 Group Fee  
(includes food & snowshoes)*

Location: Trails in Eagle Point  
Provincial Park.  
When? Seasonal year round.

Family & Adult



## Interpretive Nature Hike/ Nature

This 1 to 2 hour walk gets you closer to nature while exploring the flora & fauna of our local forests. We will discover edible plants & fungi while learning about local natural history.

*\$100 Group Fee for Nature Hike  
(6 person max)*

Turn your walk into a Nature Journalling Session and find your inner Zen.

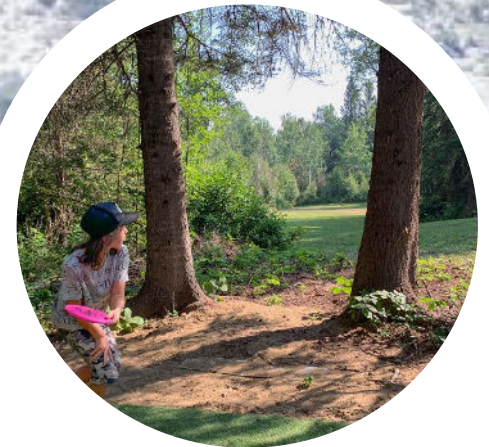
*\$100 Group Fee plus \$45/person for  
Nature Journals & Sketching Supplies.  
(6 person max)*

Location: Eagle Point Provincial Park  
When? May to September



Family & Adult

# Team Building



Reward or motivate your organization with a half day or full day of outdoor activities, designed to get your staff working together while thinking outside the box! Choose fun sessions to build group solidarity and creativity! Disc Golf, Capture the Flag, Human Knot, Outdoor Survival Skills, Team Challenges, Short Hikes, Outdoor Cooking & More!

Contact us for a FREE consultation and pricing.

Location: Pembina Nordic Centre

When: September to May

How Long? 1/2 Day or Full Day

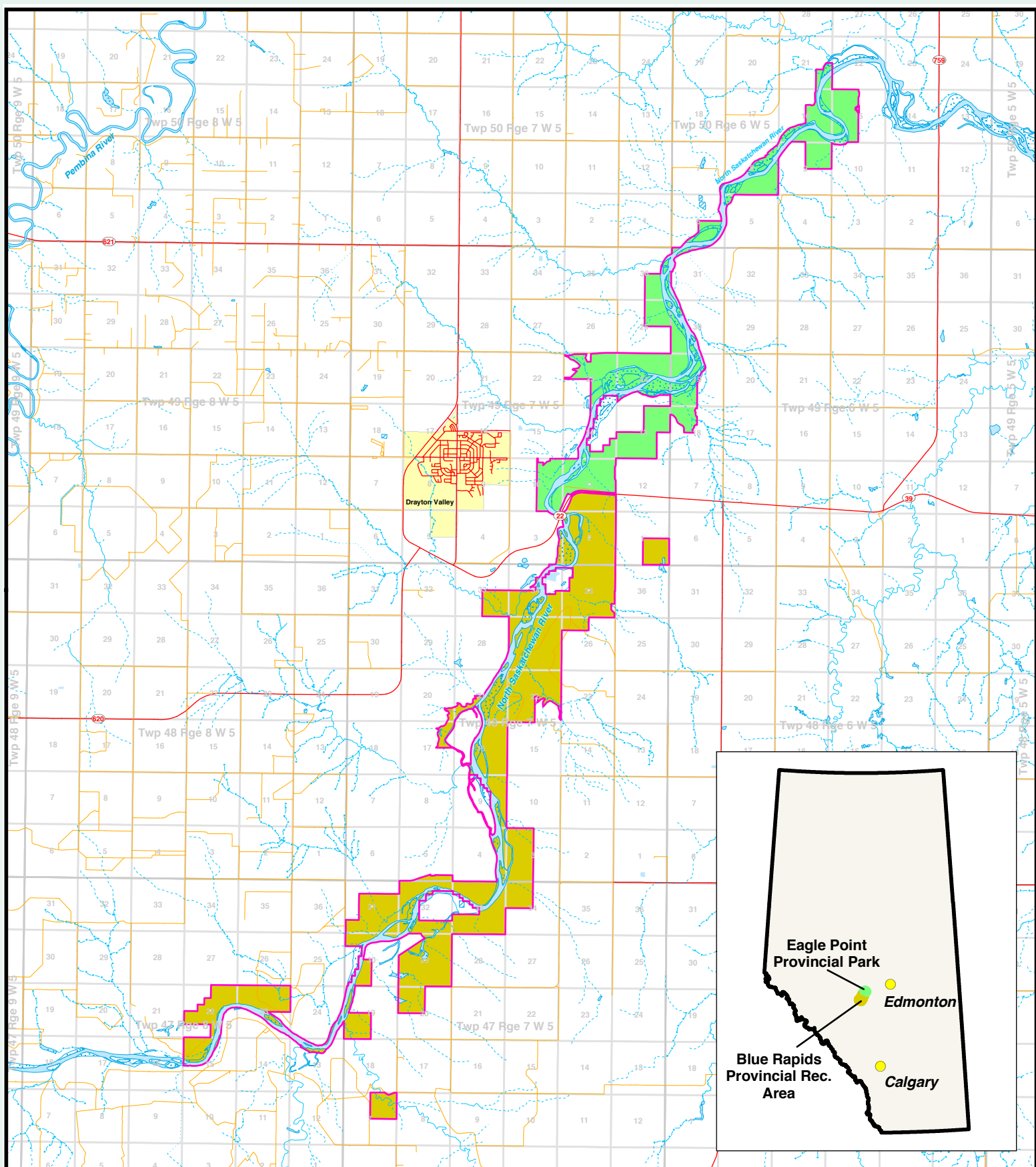
Contact us for pricing at [education@epbrparkscouncil.org](mailto:education@epbrparkscouncil.org)



# Notes



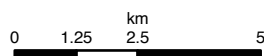




DEPARTMENT OF TOURISM, PARKS, RECREATION and CULTURE  
Parks, Conservation, Recreation and Sport Division

## Eagle Point Provincial Park and Blue Rapids Provincial Recreation Area

- Eagle Point Provincial Park
- Blue Rapids Provincial Recreation Area



**Alberta**  
TOURISM, PARKS,  
RECREATION AND CULTURE

Map produced August 31, 2007.  
Base features digital map data supplied by  
Resource Information Management Branch, ASRD.



Box 7355  
Drayton Valley, Alberta  
T7A 1S6  
780-898-7275

Email: [outreach@epbrparks council.org](mailto:outreach@epbrparks council.org)

Website: [www.epbrparks council.org](http://www.epbrparks council.org)