

Eagle Point – Blue Rapids Park System Vegetation Classification Summary

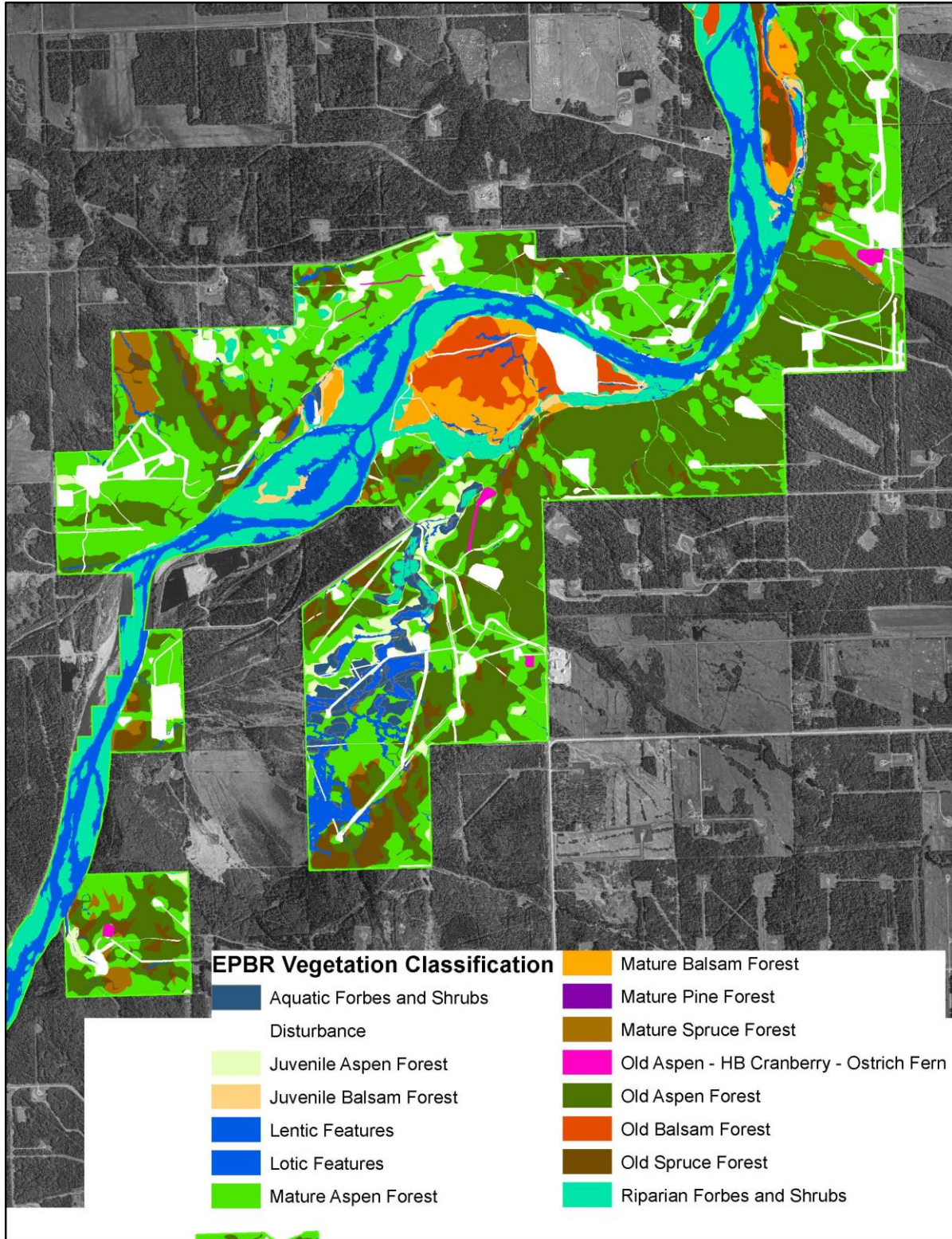
The Eagle Point – Blue Rapids (EPBR) Vegetation Classification is a science-based classification of natural terrestrial vegetation occurring within the Park System. This report is primarily intended to inform planning and management decisions regarding the Park System and surrounding land base. Examples of such planning and management decisions include:

- Setting conservation priorities
- Locating and developing new recreational or industrial facilities
- Restoring and/or reclaiming disturbed areas

Field work and subsequent analysis identified six distinct terrestrial vegetation communities amongst the native vegetation of the Park System. This report describes these six natural vegetation communities, including a list of expected species and a map of the spatial distribution of communities across the Park System. The report also gives a general overview of aquatic ecosystems, and provides a guide for identifying the different communities in the field.



Typical Balsam Forest vegetation.



Example of Vegetation Classification map of the Park System.